



# Monster Mash

By Sue Ninham

SALA



Women's &  
Children's Hospital  
Foundation



Image: *Desert Rose Beryl*

Sue paints intuitively, with experimentation often underpinning her creative process. Working in this way, she has developed a visual language that reflects form, space and colour.

Whilst there is an element of abstraction in the Monster Mash works, they also show evidence of her illustration design education and training.

Sue's work continually evolves through her experimental techniques and processes, including collage, oil on canvas, watercolour and more recently textiles.

Sue was a commissioned artist on the New Royal Adelaide Hospital Integrated Art Project and winner of the 2012 Adelaide Fringe Poster competition. As an Artist

in Residence she has worked at Loreto College and Wilderness School. Sue has exhibited nationally and international and is represented in Adelaide by BMG Art. Her work is held in private collections nationally and internationally

Sue Ninham's Monsters made their first public appearance on the 2012 Adelaide Fringe Poster.

*In 2011 I began to paint a series of watercolour creatures or Monsters.*

*My father had passed away not long before and I was very sad. I was also prolific in my creative output at this time and the Monsters were a part of this outpouring of creative energy. They are playful and quirky, despite my sadness.*

*I painted hundreds of them over the next two years, naming them and writing a story for each. I designed the winning 2012 Fringe poster, featuring nine of them.*

*My favourite Monster is Beryl. There is a little bit of me in all of them but a whole lot in Beryl. I have written a children's book about her called 'Beryl's Blooms' and I hope to complete the illustrations in 2019 and then have the book published.*

Over 200 hundred Monsters have found new homes to be mischievous in. Monster Mash showcases five of the original gang and unleashes twelve new quirky creatures to bring a smile to your dial!

During August, Sue will be running a workshop with patients in Hospital School, making connections between illustration, art making, character development and storytelling. Women's & Children's Hospital Foundation is pleased to recognise this exhibition for Book Week 2019. Book Week celebrates Australian children's literature and this year the theme for Book Week is *Reading is my Secret Power*.

For more about Sue Ninham's work:

[www.sueninham.com](http://www.sueninham.com)

[Instagram.com/sueninham](https://www.instagram.com/sueninham)

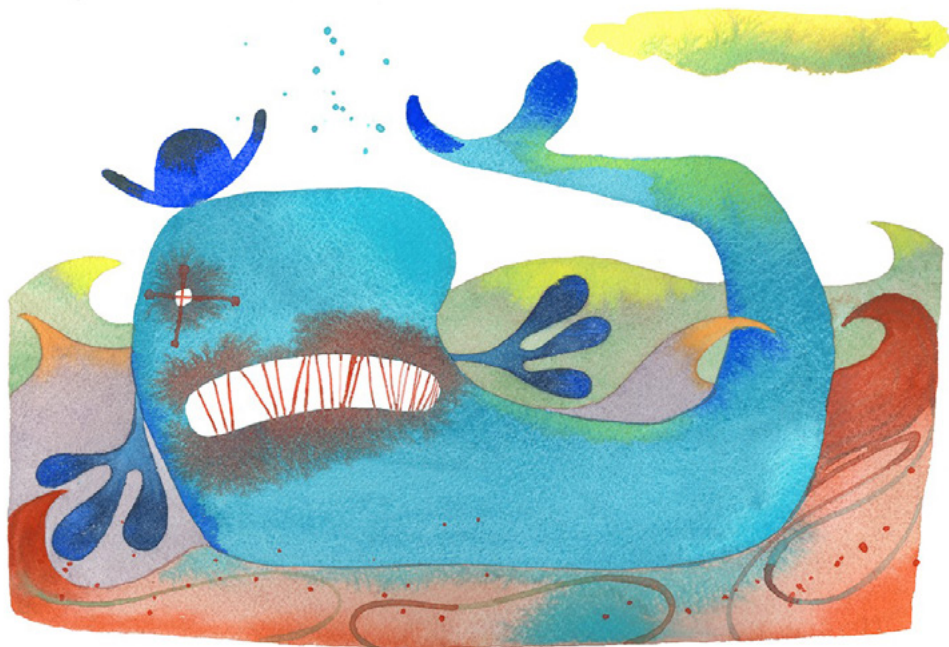


Image: *Moby comes up for Air*

The Women's & Children's Hospital Foundation (WCH Foundation) raises funds in support of the Women's and Children's Hospital in Adelaide, South Australia. The WCH Foundation is committed to creating greater good, ensuring that mums, children and their families have access to the very best in medical care, hospital facilities and support services at a time when they need it the most.

The WCH Foundation has developed Arts in Health programs to integrate art into the life of the Hospital to improve people's health and wellbeing. We try to make the environment more 'child-friendly', making it look better and help to make the time spent in hospital 'feel better'.

The Arts in Health program delivers a range of activities throughout the hospital across art forms such as: Visual Arts, Digital Media, Music and Performing Arts, Public Art, Literature and the Therapeutic Arts (Play Therapy, Art Therapy and Music Therapy). From providing pencils and colouring books in waiting areas, to managing Gallery spaces and art displays in the Hospital, collaborating with Hospital School on book week activities and working closely with the Play Therapy Team, the Arts in Health program delivers smiles and fun throughout the Hospital.

The WCH Foundation's Gallery program coordinates five galleries in the Hospital, providing a space away from the stresses of treatment to distract, entertain and inspire, improving the visual environment. The artworks displayed in the exhibition spaces come from a range of sources – internally from hospital staff, patients (women & children) and their families, through specific Arts in Health activities and externally from local artists and art collectives.

This exhibition was planned and exhibited on the lands of the Kurna People, we pay our respects to the Kurna Elders past and present and to the Elders of the lands this brochure reaches.

Cover image: detail of *Cutie Pie Sees Red*



**For more information contact:**

Lauren Simeoni, Arts Officer, Arts in Health  
artsinhealth@wchfoundation.org.au | T 08 8464 7900  
55 King William Road | North Adelaide | SA 5006  
www.wchfoundation.org.au