

A Territory Inspiration

By Kristen 'Chiggy' Johnson



Women's &
Children's Hospital
Foundation



Image: detail of *Balance*

Kristen Johnson (Chiggy) is an artist based in Darwin, NT. She paints instinctively, combining vivid colours and positive thinking to create her semi abstract artworks, influenced by the incredible top-end landscapes.

This exhibition, *A Territory Inspiration* uses an intuitive approach to begin each painting, which allows Chiggy to have some fun adding layers of colour and letting go of expectations. Artworks draw inspiration from the Northern Australian harsh, yet beautiful, landscapes with all its amazing shapes and colours, places where she spends time camping and exploring. Chiggy strives to create artworks with an energy that allows the viewer to have an emotional connection, either drawn by the colour or allowing the images to spark a memory.

'It is so very satisfying watching someone connect with my work. However, they are drawn to it and the story they convey when the artwork triggers a memory or emotion. This is what keeps me painting.'

This body of work is just a snapshot of the range of artworks within Chiggy's practice, all inspired by our natural world, with some more abstract than others.

Originally from South Australia, Chiggy grew up in and around the beautiful Murray River where she frequently returns to relax, recharge and inspire.

To learn more about Kristen's work and shop her various products:
www.chiggy.com.au

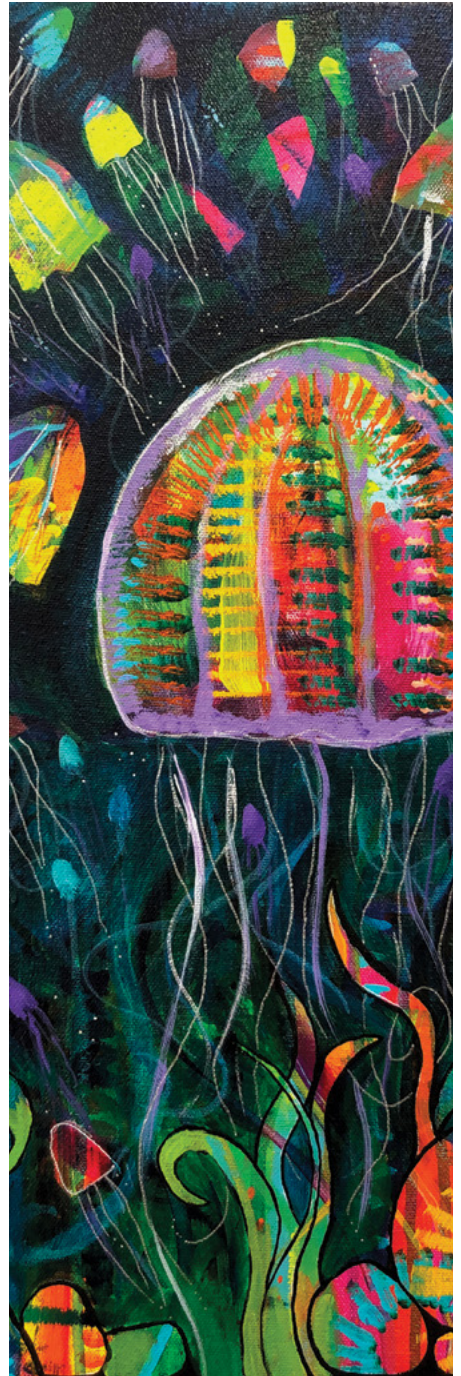


Image: detail of *Smack Of Jellies*

The Women's & Children's Hospital Foundation (WCH Foundation) raises funds in support of the Women's and Children's Hospital in Adelaide, South Australia. The WCH Foundation is committed to *creating greater good*, ensuring that mums, children and their families have access to the very best in medical care, hospital facilities and support services at a time when they need it the most.

The WCH Foundation has developed Arts in Health programs to integrate art into the life of the Hospital to improve people's health and wellbeing. We try to make the environment more 'child-friendly', making it look better and help to make the time spent in hospital 'feel better'.

The Arts in Health program delivers a range of activities throughout the hospital across art forms such as: Visual Arts, Digital Media, Music and Performing Arts, Public Art, Literature and the Therapeutic Arts (Play Therapy, Art Therapy and Music Therapy). From providing pencils and colouring books in waiting areas, to managing Gallery spaces and art displays in the Hospital, collaborating with Hospital School on book week activities and working closely with the Play Therapy Team, the Arts in Health program delivers smiles and fun throughout the Hospital.

The WCH Foundation's Gallery program coordinates five galleries in the Hospital, providing a space away from the stresses of treatment to distract, entertain and inspire, improving the visual environment. The artworks displayed in the exhibition spaces come from a range of sources – internally from hospital staff, patients (women & children) and their families, through specific Arts in Health activities and externally from local artists and art collectives.

This exhibition was planned and exhibited on the lands of the Kaurna People, we pay our respects to the Kaurna Elders past and present and to the Elders of the lands this brochure reaches.

Cover image: *Boab Country*



For more information contact:

Lauren Simeoni, Arts Officer, Arts in Health
artsinhealth@wchfoundation.org.au | T 08 8464 7900
55 King William Road | North Adelaide | SA 5006
www.wchfoundation.org.au



facebook.com/wchfoundation



instagram.com/wchfoundation



twitter.com/wchfoundation