

Nature Walk with Jess by Jessica Menzies



Women's &
Children's Hospital
Foundation
Arts in Health

Nature Walk with Jess is an exhibition celebrating the connection between Jessica Menzies art practice and the world around her. The title of the show reflects the way Jessica welcomes people and places into her life and the integral part they play in the art she creates. She has genuine empathy and connection to people which motivates her art practice. Initially she created art for her own pleasure but over time she has moved beyond this to creating art for the pleasure and enjoyment of others.

Reflections of bush walking and working outside have been consciously integrated into Jessica's art practice. Her talent for capturing moments of pure happiness is a keen testament to her observations of life's small wonders.

Art is the voice Jessica uses and this exhibition is a welcoming invitation from Jessica to view her abstract landscapes, to transport yourself momentarily into the colourful, joyful, and optimistic lens through which Jessica experiences the world.

Her continual experimentation with materials and mark making is constantly evolving. Her work continuously remains inimitably herself, with bold, energetic marks, a bright colour pallet and a bucket load of care and love.

Jessica says her art can 'cheer people up' and offer joy in times of difficulty. It is not just the visual aspects that make Jessica's work so captivating, but the emotions they evoke and the stories they tell. Her art embraces the beauty of the world.

Jessica has a rich creative practice, exhibiting regularly, has produced a range of printed tea towels, and has created artwork for rural hospitals, including Mount Isa, Longreach, Kununurra and Mildura.

She has the talent and capability to take people beyond the walls of the hospital and embark on a transformative voyage of happiness where visitors can find solace and new inspiration.

Learn more about Jessica's practice:

www.ajarhomeware.com + Instagram [@ajar_homewar](https://www.instagram.com/ajar_homewar)

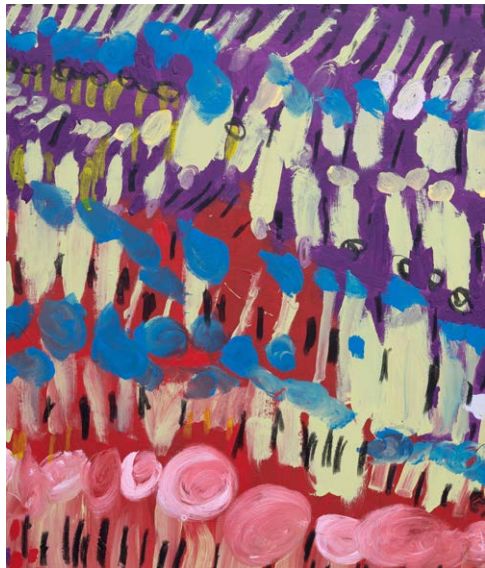


Image top left: 'Yesterday in Mt Isa'
 Image top right: 'Remembering Cleland Wildlife'
 Image bottom left: detail of 'By the Lake'
 Image bottom right: portrait of Jessica Menzies

The Women's and Children's Hospital Foundation (WCH Foundation) improves the health and wellbeing outcomes for children and families under the care of the Women's and Children's Hospital and the broader Health Network.

The WCH Foundation Arts in Health program creates an interactive and vibrant hospital environment that improves the health and wellbeing of the hospital patients, their families and staff. Through art, play and music, we encourage curiosity and creativity and reduce the stress of being in hospital.

The Arts in Health Exhibition program provides a space away from the stresses of treatment to distract, entertain and inspire by improving the hospital environment. The artworks displayed in the exhibition spaces come from a range of sources – internally from hospital staff, patients (women & children) and their families, through specific Arts in Health activities and externally from local artists and art collectives.

This exhibition was planned and exhibited on the lands of the Kaurna People, we pay our respects to the Kaurna Elders past and present and to the Elders of the lands this brochure reaches.

Cover Image: detail of *'Mt Lofty Spring Flowers'*



Women's &
Children's Hospital
Foundation

Arts in Health

For more information contact:

Lauren Simeoni, Arts Manager, Arts in Health
artsinhealth@wchfoundation.org.au | T 08 8464 7900
55 King William Road | North Adelaide | SA 5006
www.wchfoundation.org.au



facebook.com/wchfoundation



instagram.com/wchfoundation



twitter.com/wchfoundation