



Bowerbird by Faith Porter



Women's &
Children's Hospital
Foundation
Arts in Health

SALA

Faith Porter is a registered nurse, a mother and an artist. *"I am a mother to a beautiful 13-year-old boy with severe disabilities. Art has increasingly become a therapy and escape in my busy and often overwhelming world of responsibilities and isolation."*

Faith is an intuitive artist who enjoys painting in acrylic, ink, pencil and collage. She loves experimenting with a broad range of mediums, but always comes back to mark making and colour as her two favourite ways of expression.

"I make marks with pencil and charcoal and create texture from collage and scratching. Colours speak emotions and convey words that I can never find."

The paintings in this exhibition *Bowerbird* are a series of experimental portraits. Faith explains that each face tells a story and expresses hidden emotions that she is unable to put together into words. *"My purpose in painting these portraits is to elicit an emotional response from the viewer, for them to develop a connection to their inner world."*

"I love the fact that I can share my creativity to the patients and families who come through the hospital. As a consumer I have experienced the joy and much needed distraction that having art to look at can bring."

"I also know that some people will be able to relate to the emotions that I try to express through my artwork, which are based on my own experience as a mother, an advocate and a human struggling to balance the challenges of life raising a child with complex medical needs."

The Arts in Health team is proud to present Faith's exhibition as part of the South Australian Living Artists Festival.

To see more of Faith's art practice: Instagram [@faith.porter.art](https://www.instagram.com/faith.porter.art)

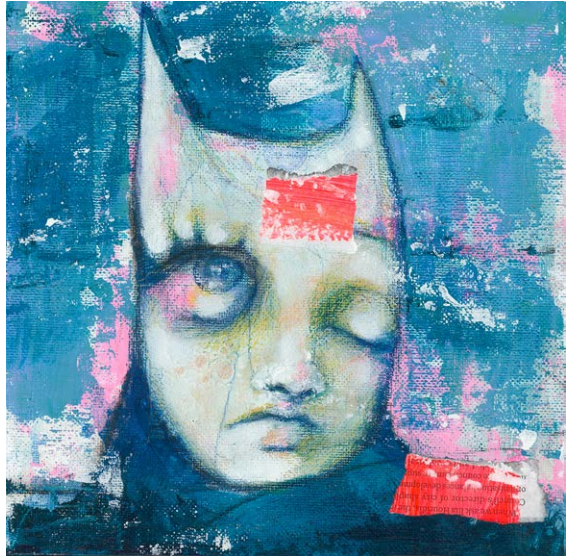


Image top left: *Tweedledum*

Image top right: *Imposter #2*

Image bottom left: *Beetlejuice #2*

Image bottom right: portrait of Faith Porter

The Women's and Children's Hospital Foundation (WCH Foundation) improves the health and wellbeing outcomes for children and families under the care of the Women's and Children's Hospital and the broader Health Network.

The WCH Foundation Arts in Health program creates an interactive and vibrant hospital environment that improves the health and wellbeing of the hospital patients, their families and staff. Through art, play and music, we encourage curiosity and creativity and reduce the stress of being in hospital.

The Arts in Health Exhibition program provides a space away from the stresses of treatment to distract, entertain and inspire by improving the hospital environment. The artworks displayed in the exhibition spaces come from a range of sources – internally from hospital staff, patients (women & children) and their families, through specific Arts in Health activities and externally from local artists and art collectives.

This exhibition was planned and exhibited on the lands of the Kaurna People, we pay our respects to the Kaurna Elders past and present and to the Elders of the lands this brochure reaches.

To see our other exciting exhibitions within the Women's and Children's Hospital visit: wchfoundation.org.au/arts-in-health/gallery-exhibition-program/

Cover Image: detail of *Juno*



Women's &
Children's Hospital
Foundation
Arts in Health

For more information contact:

Lauren Simeoni, Arts Coordinator, Arts in Health
artsinhealth@wchfoundation.org.au | T 08 8464 7900
55 King William Road | North Adelaide | SA 5006
www.wchfoundation.org.au



facebook.com/wchfoundation



instagram.com/wchfoundation