



# CONNECTION

An exhibition by Katie Sandison

Women's & Children's  
Hospital Foundation



Passionate about raising awareness of Australia's unique botanicals and bird life species, South Australian watercolour painter Katie Sandison loves to create artworks which connect to the land through colourful splashes and illuminating metallic compositions.

*Her unique Australian flora and fauna painting series was established in 2017 with the vision to capture purposeful documentation, highlight the importance of vulnerable, common, and extinct species through vibrant complimentary colour palettes.*

Katie's curated exhibitions have raised funds for many wildlife and environmental organisations with three art shows since 2021 at Adelaide Airport.

Katie attended Ruth Tuck Art School from the age of seven and often spent time with the renowned watercolourist, being a family friend. Tuck's Impressionist and modernist watercolour style has greatly influenced Katie's artistic journey.

*Her work incorporates elements of English Pre-Raphaelite romanticism, Byzantine decorative gold, and French Impressionism, with a distinctly Australian twist.*

After teaching in secondary schools for over 22 years, Katie resigned and established her art business, 'Katie Sandison Fine Art', from her Mitcham Studio and a children's art school in Adelaide. She now offers art workshops to adults and works for various organisations, including libraries, community centres, councils, and galleries. Katie's mixed media landscapes, still-lives, and bird compositions are exhibited in galleries, regional galleries, art fairs, gift shops, and by collectors.

Learn more about Katie's practice: [www.katiesandison.com](http://www.katiesandison.com)  
and Instagram [@Katiesandisonfineart](https://www.instagram.com/Katiesandisonfineart)



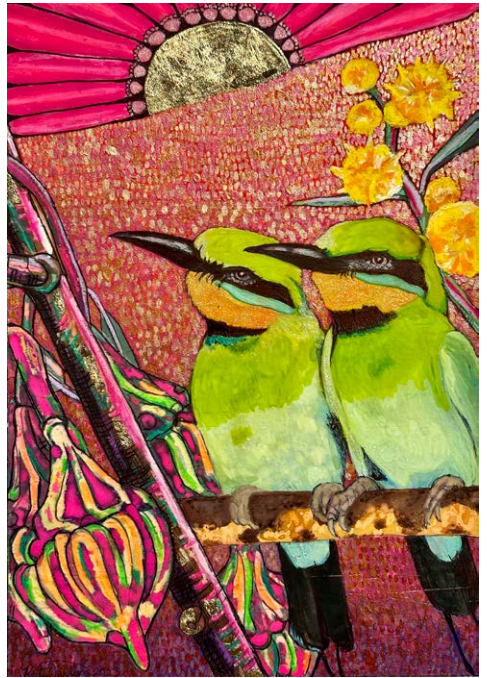


Image top left: *Mr Red in a red sky*, Photograph Print

Image top right: *Bee-Eater couple in a golden sunset*,  
Gold leaf and mixed media on canvas print

Image bottom left: *Blue Wren couple and three Yellow Tails  
in a golden sky*, Gold leaf and mixed media on canvas print

Image bottom right: photo of Katie Sandison

The Women's & Children's Hospital Foundation partners with the community to ensure that every child and family thrives. Dedicated to families, we go the extra mile, providing essential care and support when it is needed the most.

The WCH Foundation Arts in Health program creates an interactive and vibrant hospital environment that improves the health and wellbeing of the hospital patients, their families and staff. Through art, play and music, we encourage curiosity and creativity and reduce the stress of being in hospital.

The Arts in Health Exhibition program provides a space away from the stresses of treatment to distract, entertain and inspire by improving the hospital environment. The artworks displayed in the exhibition spaces come from a range of sources – internally from hospital staff, patients (women & children) and their families, through specific Arts in Health activities and externally from local artists and art collectives.

This exhibition was planned and exhibited on the lands of the Kaurna People, we pay our respects to the Kaurna Elders past and present and to the Elders of the lands this brochure reaches.

Cover image: detail of *Mr Emu with eucalyptus pink flowers in a night- time sky*, original watercolour and mixed media on plywood



Women's & Children's  
Hospital Foundation

**For more information contact:**

Lauren Simeoni, Arts Manager, Arts in Health  
[artsinhealth@wchfoundation.org.au](mailto:artsinhealth@wchfoundation.org.au) | T 08 8464 7900  
55 King William Road | North Adelaide | SA 5006  
[www.wchfoundation.org.au](http://www.wchfoundation.org.au)