

Women's & Children's
Hospital Foundation

IMPACT REPORT

2025-26



Our Purpose

Healthcare without limits so every child has every chance.

Our Mission

Connect generosity with action to positively transform healthcare for women, children and families of the Women's and Children's Health Network.

What Drives Us

The WCH Foundation partners with our generous community to fund vital programs and services that support the Women's and Children's Health Network.

From medical equipment and emergency family support to our Laklinyeri Beach House, Arts in Health, and life-changing research, we're here to ensure every child has every chance.

Our impact reaches beyond Adelaide, supporting children and families across South Australia, the Northern Territory, Broken Hill, and the Sunraysia Region of Victoria who rely on specialist care from the Women's and Children's Health Network.

Acknowledgement of Country

The Women's & Children's Hospital Foundation acknowledges the Kaurna people as the Traditional Custodians of the Adelaide Plains, the land on which we work and support the Women's and Children's Hospital. We recognise and respect their enduring connection to land, waters, skies, and community, and their ongoing contribution to the health and wellbeing of children and families. We pay our respects to Elders past, present and emerging, and extend that respect to all Aboriginal and Torres Strait Islander peoples.

Contents

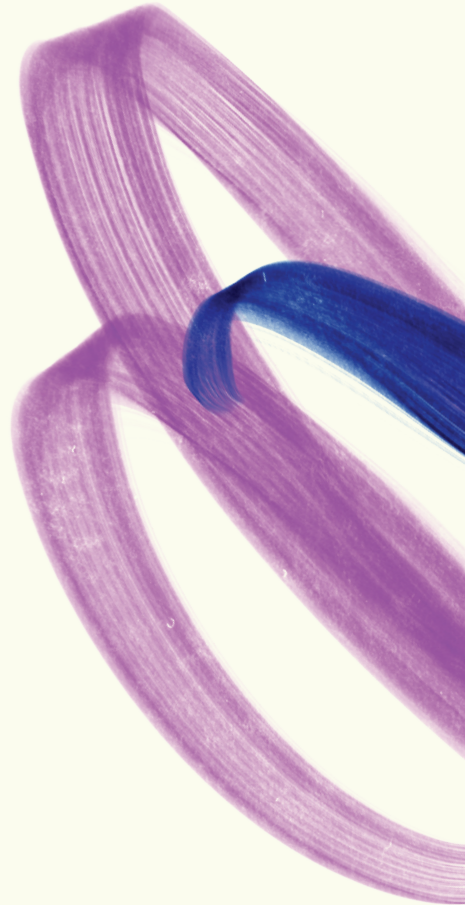
Year in Review 8

A Hospital Made for Childhood 12

Care Beyond Treatment 24

The Best for Every Child 34

Partnering for Purpose 52



A Message From the CEO

Hand in hand, we are positively transforming healthcare for children and families.

As I reflect on the past year, I want to begin with sincere gratitude. It is only thanks to our incredible community of supporters, volunteers, donors and ambassadors that we've been able to strive for healthcare without limits for every patient and family.

And I am proud to say that this past year has been a record-breaking year of impact.

Because of your generosity, almost \$6m has been contributed to enhancing clinical care, improving the patient experience, and accelerating new discoveries through medical research. You have helped the Women's and Children's to care holistically for children and families across South Australia, and beyond, in a way that medicine alone cannot.

Because of you, specialised care is reaching more families than ever before. Programs such as the Alongside Grief of Loss program ensure that all families experiencing the death of a child are able to access wrap-around bereavement support for the whole family, no matter where they live.

Your ongoing commitment to the patient and family experience has touched every corner of the Hospital. You've supported Play Therapy and the Foundation's leading Arts in Health program, nurturing physical healing, strengthening emotional resilience, and creating moments of calm and joy for thousands of children this year.

And through your investment into research, you are shaping the future of healthcare. Thanks to you, researchers across the state are accelerating discoveries, improving access to new innovations and pioneering bold new treatments such as immunotherapy for childhood cancers, rapid diagnostic tools for lung infection, and gene therapy for rare diseases.

Finally, your compassion has meant that hundreds of families with a child or baby in hospital have been able to hold things together.



Verity Gobbett | Chief Executive Officer

Through our Family Support program, you've helped us to fund short-term accommodation to keep families close-by, helped with groceries, utility bills, or ambulance cover. Because of you, we have responded to the needs of hundreds of hospital families when it mattered most.

Looking ahead, we're delighted to be part of the future of paediatric healthcare with construction now underway on the new Women's and Children's Hospital. The philanthropic community brought together by the WCH Foundation will play an integral role in bringing the very best hospital care to South Australia. Innovative spaces designed to support whole-family healing and technologies and environments that promote clinical excellence, your support will deliver long-term impact for the families of the future. This is a once-in-a-generation opportunity to be a part of a new era of healthcare for our families and we are so grateful to have your support.

The future is bright.

Thank you for standing with us as we strive for a future where every child has every chance. I hope you feel proud, as I do, of the impact you have helped to create for sick kids and their families, today, and for future generations.

With gratitude,

Verity

Verity Gobbett



Our Board of Directors

The Women’s & Children’s Hospital Foundation is governed by a dedicated Board who generously contribute their leadership, expertise, and passion to help guide our mission and future direction. Led by Chair Michael Luchich, the Board provides strategic oversight and governance that supports the Foundation’s continued growth and impact for children, families, and healthcare across South Australia.



Verity Gobbett
Chief Executive Officer



Michael Luchich
Chair



Christine Molitor
Deputy Chair



**Commissioner
Cameron Baker**
Board Member



Daniel Lalic
Board Member



Dr Evelyn Yap, OAM
Board Member



Jim Birch, AM
Board Member



Lee Girolamo
Board Member



Leonie Boothby
Board Member



Morry Bailes, AM
Board Member



Phil Boyle
Board Member

To read more about our Board and see our list of committee members go to: wchfoundation.org.au/our-people

Our Senior Leadership Team

Our senior leadership team brings together diverse skills across fundraising, marketing, programs, governance and strategy. The team works closely to lead innovative initiatives, strengthen partnerships and support the Foundation’s vision of healthier futures for children.

- Danyelle Robson** - Head of Finance & Governance
- Fern Cargill** – Head of Fundraising
- Verity Gobbett** – Chief Executive Officer
- Jessica Wilde** – Head of Marketing
- Dr Chelsea Mauch** – Head of Programs & Impact

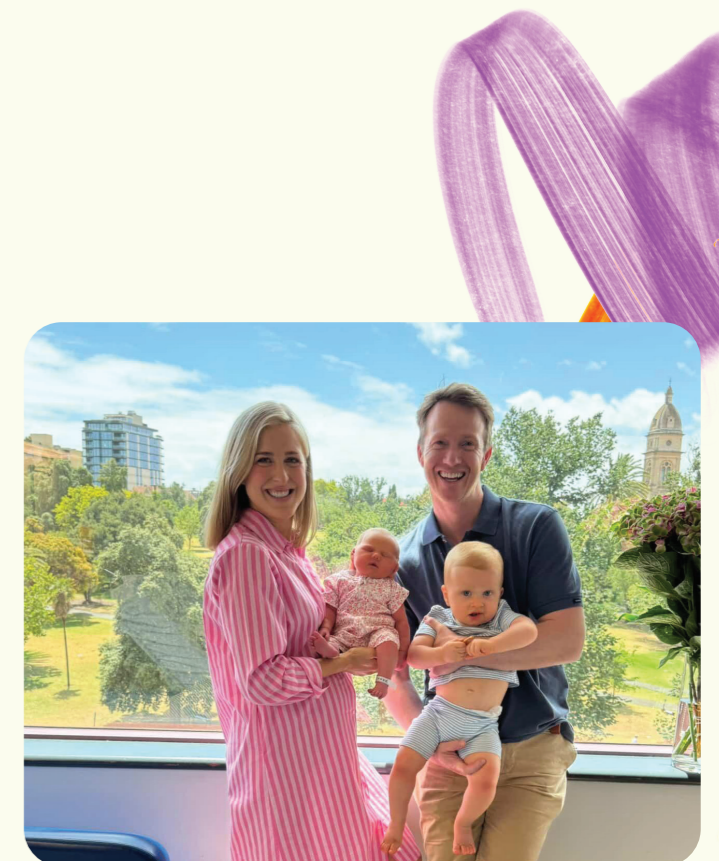


A Message From our Ambassador, Elspeth Hussey

Supporting the Women’s & Children’s Hospital Foundation as an ambassador feels like a very natural fit because of my family’s deep connection to the hospital.

I had both of my babies there - Monty in 2024 and Daphne in 2026 - and the care we received was exceptional. I couldn’t imagine having my children anywhere else. My mum also worked as a midwife and Nurse Practitioner in the NICU for nearly 40 years, so the hospital has long held a special place in our family’s life.

I’m proud to support the Foundation’s tireless work raising funds and awareness to improve the hospital’s services, facilities and care for South Australian children and families. Seeing firsthand the compassion and dedication of the staff, and the impact the Foundation has behind the scenes, only reinforces how important this work truly is.



Elspeth, Daphne, Allistair and Monty

Year in Review

August



WCHN EXCELLENCE AWARDS

We were proud to support the 2025 Women's and Children's Health Network Excellence Awards, a special evening celebrating the dedication, innovation, and compassion of staff, volunteers, and consumer advocates across the network.

The night recognised the extraordinary impact of programs and teams working to improve care and outcomes for children and families across South Australia. We were especially thrilled to see several Foundation-supported initiatives honoured, including the Alongside Grief and Loss program, the Cocoon program, the Disability Access and Inclusion Project at Yarrow Place, and the Haematology Oncology School Team.

These awards are a powerful reminder of what can be achieved through collaboration, innovation, and a shared commitment to delivering the very best care for children and families.

September



A PLAYGROUND FOR EVERY CHILD

Joy, laughter, and excitement filled the air as the brand-new playground at the Women's and Children's Hospital officially opened, creating a vibrant and inclusive space for children and families to play, recover, and connect.

Children attending the opening celebration eagerly explored the playground's many features, including interactive sensory panels, balance and strength-building equipment, and inclusive play structures such as a wheelchair-accessible carousel. Thoughtfully designed to support children of all abilities, the playground offers a place for movement, therapy, imagination, and moments of normalcy during challenging times.

Made possible through the generosity of our incredible community, this special space will support thousands of children and families for years to come.

October



CELEBRATING IMPACT TOGETHER

In October, we had the privilege of welcoming donors, partners, and supporters to the Playford Hotel for our Impact Event, celebrating the remarkable difference our community has made for children and families over the past year.

The evening brought together supporters united by a shared commitment to advancing healthcare, research, and wellbeing for women, children, and families across South Australia. Guests heard powerful stories of impact and the many ways community generosity continues to transform lives.

We were honoured to be joined by special guests The Hon Chris Picton MP, Minister for Health and Wellbeing, The Hon Tung Ngo MLC, Member of the South Australian Legislative Council, and Rebecca Graham, CEO of the Women's and Children's Health Network. Their presence highlighted the importance of collaboration in creating healthier futures for children and families in our community.

November



PROCARE CHARITY CRICKET DAY

Procare continued their incredible support of the Women's & Children's Hospital Foundation this year, once again rallying their community through their much-loved annual Charity Cricket Day.

What began with a fundraising goal of \$10,000 quickly grew into something extraordinary, with the event raising an incredible \$20,000 to support women, children, and families in our community.

The day brought together supporters, businesses, and community members for a fun-filled celebration of generosity, connection, and friendly competition, all united by a shared desire to make a difference.

We are incredibly grateful to the Procare team for their ongoing commitment and for continuing to champion children and families who need support the most.

Year in Review

December



GIFTS, GIVING AND CHRISTMAS JOY

Throughout the festive season, our community once again showed extraordinary generosity, helping bring comfort and joy to children and families spending Christmas in hospital.

With more than 100 donations received from local families, community groups, and businesses, the spirit of giving was felt throughout the Women's and Children's Hospital. From toys and gifts to thoughtful donations organised through workplaces and schools, every contribution helped brighten what can often be a difficult and emotional time for families.

These acts of kindness created special moments of joy for children unable to spend Christmas at home, reminding families they were surrounded by the care and support of their community during the holiday season.

March



COSTCO VIP NIGHTS

Costco once again partnered with the Foundation to host a series of special VIP Shopping Nights at the Kilburn store.

Across two exclusive non-member shopping events, community members were invited to enjoy the Costco experience while supporting children and families connected to the Women's and Children's Hospital. Through generous donations made upon entry, the community came together to raise more than \$20,976 over the two-week campaign.

We are incredibly grateful to Costco and every shopper who supported these events, helping create meaningful impact.

April



SUPERHEROES SAVE THE DAY

There were smiles, excitement, and a little bit of superhero magic at the Women's and Children's Hospital as we celebrated National Superhero Day. Patients, families, and staff were treated to a special visit from some beloved superheroes, who made a spectacular entrance by abseiling down the Hospital before heading inside to meet children throughout the wards.

For children spending time in hospital, moments like these provide a welcome distraction from treatment and help create positive memories during what can often be a challenging experience. High-fives, photos, and shared laughter transformed hospital corridors into heroic headquarters for the day.

May



HAS FOUNDATION SUPPORTS LAKLINYERI BEACH HOUSE

We were incredibly grateful to receive a generous \$50,000 contribution from the HAS Foundation in support of the Laklinyeri Beach House.

Since opening its doors, the Beach House has welcomed more than 200 families navigating complex or palliative care, as well as bereaved families, offering them a peaceful sanctuary to spend precious time together in the purpose built holiday home.

The HAS Foundation's support will help ensure families can continue to access this special place of connection, rest, and reflection during some of life's most challenging moments.

Together, we are helping create opportunities for families to make treasured memories and experience comfort, care, and togetherness when it matters most.

A HOSPITAL MADE FOR CHILDHOOD

A Place to Play, Recover and Just Be Kids

Thanks to the generosity of our donor community, the Women's and Children's Hospital is now home to a brand-new inclusive playground, a vibrant and purpose-built space designed to support therapy, movement, inclusion and recovery for the thousands of children who visit the Hospital every year.

Informed by patients and families, the playground represents far more than just a place to play. It is a place to reset between appointments, recover after treatment, release energy after long days on the ward, or simply feel like a child again during an incredibly difficult time.

Behind every family who visits the playground is a unique healthcare journey, and the space means something different to each child who uses it. For some, it offers a moment of escape from the clinical environment. For others, it supports important physical therapy and rehabilitation goals.

"Play is essential to a child's wellbeing. It supports emotional regulation, gives a sense of control and allows for safe movement, all vital elements of healing," says Jill Newman, Arts in Health Manager at the Women's & Children's Hospital Foundation.

The playground is equally important to siblings and caregivers as it becomes a place to reconnect as a family. These moments of togetherness can bring a sense of normalcy to the hospital experience.

The brand-new hospital playground is officially open and families are making joyful memories in this inclusive and purpose-built space.

Thoughtfully designed with every child in mind, the playground features interactive sensory panels, climbing and balance equipment, strength-building activities and inclusive play structures, including a wheelchair-accessible carousel. Every element was carefully considered to support the physical, emotional, developmental and therapeutic needs of children of all ages and abilities.

The playground officially came to life during a joyful opening celebration, where children explored the new space alongside face painters, balloon artists and hospital families. The excitement and laughter highlighted just how important spaces like this are within a hospital setting.

The redevelopment was made possible thanks to the incredible generosity of donors, supporters and community partners who helped bring the vision to life. Their support has created a lasting space that will continue supporting children and families for years to come.



A Season for Giving

For families with children spending Christmas in hospital, the festive season can be isolating.

Instead of celebrating at home surrounded by family traditions, many children and parents face long days on the ward, ongoing treatment, uncertainty and time away from loved ones.

Throughout the 2025 festive season, the generosity of our community helped bring moments of joy, comfort and magic to children who were unable to spend Christmas at home.

Hundreds of toys were donated from local families, community groups and businesses, with supporters across the state coming together to ensure children in hospital still experienced the excitement and wonder of Christmas.

The overwhelming community response also provided meaningful support for parents and carers, helping to ease some of the emotional and financial pressure that often comes with an unexpected hospital stay during Christmas.

This collective effort was a true reminder for families that even during the hardest times, they are not alone.



Big W team helping sort toy donations



Giuseppe, Enzo, Frankie and Santino



Lilly and Nikki

Steps Forward: Clive's Journey to Recovery

In August 2025, three-year-old Clive's life changed in an instant. After contracting influenza B with no initial symptoms, he suddenly deteriorated, suffering seizures before losing consciousness on the way to the Women's and Children's Hospital.

Within 36 hours, Clive was diagnosed with Acute Necrotizing Encephalopathy, a rare and severe inflammation of the brain. He spent nearly a week in the Paediatric Intensive Care Unit and, when he regained consciousness, he could no longer walk, talk or sit up independently.

For his family, the weeks that followed were filled with uncertainty as Clive began intensive rehabilitation. Slowly, progress came. From lying quietly in bed unable to communicate, Clive began crawling, rebuilding his strength day by day before eventually returning to running, chatting and smiling once again.

A significant part of Clive's rehabilitation journey has been the Dog Therapy program delivered in partnership with Delta Therapy Dogs since 2016.

While the visits bring moments of joy and comfort, animal-assisted therapy is also recognised for its ability to reduce stress and anxiety, improve communication, support emotional wellbeing and encourage participation in therapy and rehabilitation.

For Clive, the therapy dogs became a powerful source of motivation during recovery. On difficult days when even getting out of his pram felt overwhelming, the excitement of seeing the dogs encouraged him to engage, move and participate.

Today, Clive continues his rehabilitation journey with renewed strength and hope. His progress is a remarkable reflection of the resilience of children, the dedication of healthcare teams and the important role programs like Dog Therapy can play in helping children recover physically and emotionally after serious illness.



Clive with sister, Heidi, and Delta Therapy Dog, Sprocket

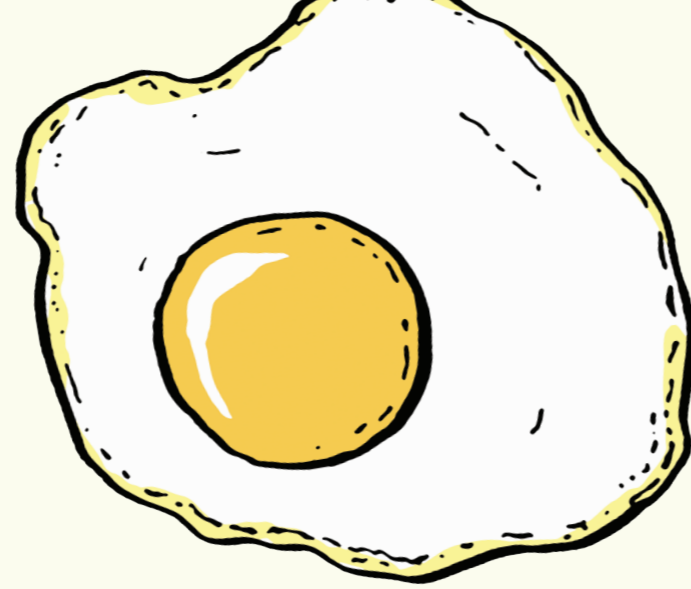
'Love Feeds Everybody' Mural

A vibrant new mural transformed the Level 2 Café at the Women's and Children's Hospital into a space of inclusion, acceptance and connection for families navigating diverse feeding journeys.

Love Feeds Everybody was created to challenge stigma, celebrate every feeding journey and remind families that every child deserves to feel seen, supported and welcomed in their place of care.

For many parents, learning their child requires tube feeding can be confronting and isolating. Tube feeding is used to support children with a wide range of medical needs, including prematurity, congenital conditions and chronic illness, yet representations of tube feeding in broader society are often limited, overly medicalised or negative.

The idea for the mural was born from the lived experience of parent and advocate Clare, who partnered with a dedicated team of Dietitians, Speech Pathologists, Home Enteral Nutrition Nurses and Food Services staff to bring the project to life. Together, they wanted to create something that would help families feel less alone while normalising tube feeding as simply another way children receive the nutrition they need to grow and thrive.



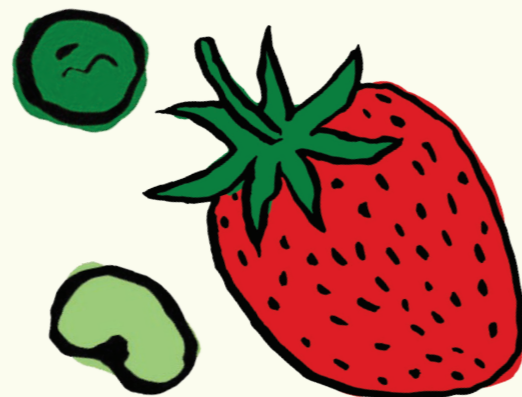
“Representations of tube feeding in our culture are often negative and overly medicalised. However, it is simply a different way for people to maintain adequate nutrition,” Clare shared. “This mural does so much to support the tube feeding community that come to the hospital.”

The artwork was created by visual artist Billie Justice Thomson, with expertise from our Arts in Health team. Developed in collaboration with hospital families, staff and guided by the Tube Feeding Consumer Group, the mural depicts a wide range of feeding experiences, from breastfeeding and bottle-feeding to tube-feeding and beyond, celebrating the many ways children are nourished, cared for and loved.

Positioned within a shared hospital café space used by patients, families, staff and visitors every day, the mural reinforces an important message: every feeding journey is valid, and every child belongs.



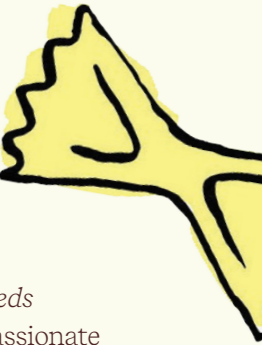
Billie Justice Thomson with Consumer Advocate Clare and son, Miles



Celebrating Every Feeding Journey Together

To celebrate the completion of the mural, we hosted a joyful afternoon tea bringing together hospital executives, healthcare teams, families, artists and supporters. Guests heard from parent and Consumer Advocate, Clare, artist Billie Justice Thomson and WCHN Executive Director Sub-Acute and Allied Health Natalie Hood, who reflected on the importance of representation, inclusion and family-centred care within healthcare environments.

More than just a piece of artwork, *Love Feeds Everybody* is helping create a more compassionate and inclusive hospital experience for children and families, one where all families can see themselves reflected, respected and celebrated.





Coming Together for Tarnanthi

As part of the celebrated Tarnanthi program at the Art Gallery of South Australia (AGSA), the WCH Foundation Arts in Health program, in collaboration with the Anangu Pitjantjatjara Yankunytjatjara (APY) Art Centre Collective, came together to present Tjunguringanyi – Coming Together.

Featuring works from six First Nations women artists, Nyunmiti Burton, Yaritji Heffernan, Megan Lyons, Sandra Pumani, Margaret Richards and Leshaye Swan, the exhibition transformed hospital spaces into places of cultural connection, storytelling and reflection.

Through paintings and ceramics, the artists shared stories of family, wellness, strength and community, bringing voices and experiences from remote communities into the heart of the hospital environment.

Presented within Ngankiku Ngartuku Kukuwardli, the Kaurna name for the Women's and Children's Hospital, the exhibition highlighted the important role art can play in creating culturally safe and welcoming healthcare spaces for Aboriginal children and families.



Megan Lyons, Leshaye Swan, Sandra Pumani, Yaritji Heffernan and Nyuhmiti Burton

A Meaningful Gathering

As part of Tjunguringanyi – Coming Together, we hosted a special gathering celebrating First Nations art, culture and community wellbeing during the Tarnanthi Festival.

The event brought together APY Art Centre Collective artists, Aboriginal Health staff and healthcare professionals for an afternoon of conversation, connection and cultural learning.

Following a guided tour of the exhibition, attendees participated in a 'Talking and Listening' session, creating a culturally safe space to share perspectives and experiences. Discussions centred on the importance of family, wellbeing and the unique healthcare experiences of patients and families living in remote communities.

The gathering provided a valuable opportunity for health professionals to deepen their understanding of culturally responsive care while strengthening connections between artists, communities and healthcare teams.

Through meaningful conversations and shared experiences, the event highlighted the important role culture, storytelling and community connection play in supporting the health and wellbeing of children and families.

We have to come together and walk the two worlds; this is my world here and yours here - bringing that together and making it happen. If I don't know your culture and you don't know my culture, we are lost... there's a gap.

- Sandra Pumani

Healthier futures
for families.



New Sensory Cart Supporting Recovery

Children recovering from orthopaedic surgery are now experiencing greater comfort and support during rehabilitation thanks to a new sensory cart.

For many children with neuromuscular and physical conditions, a hospital stay can be overwhelming. Bright lights, unfamiliar environments, loud noises and painful procedures can increase anxiety and make recovery more difficult.

To help create a calmer experience, the Rehabilitation Orthopaedic Service at the Women's and Children's Hospital was supplied with a mobile sensory cart filled with interactive tools designed to comfort, distract and motivate children throughout their rehabilitation journey.

The cart includes a bubble tube, fibre-optic sensory strands, an infinity mirror, interactive light panels and calming projections, all aimed at helping children feel more regulated and engaged during therapy and medical procedures.

When children feel safer, calmer and more supported, they are often better able to participate in therapy, helping improve recovery experiences and outcomes.

The sensory tools are already helping reduce stress during experiences such as cast removal, blood tests and cannula insertions, while also supporting participation in rehabilitation exercises.



Max engaging with the 'infinity mirror' on the sensory cart

Donors' **IMPACT**

11,431

donors and organisations have supported our impact this year.

34 YEARS

of generosity from our longest serving donor.

7,853

kind-hearted people made a monthly donation to support our impact.

CARE BEYOND TREATMENT

Strengthening Culturally Safe Care for Aboriginal Families

Developed in partnership with the University of Adelaide's Elder Conservatorium of Music Centre for Aboriginal Studies in Music (CASM), the Health Songbook Project introduced Australia's first music therapy songbook created specifically for Aboriginal peoples undergoing health treatment.

The innovative resource features 20 songs representing 14 Indigenous language groups and provides music therapists with culturally appropriate resources to support children and families in clinical and community settings. Freely available online, the songbook includes professionally recorded songs, sheet music, lyric sheets and composer notes designed to help therapists deliver more meaningful and culturally connected care.

Our Arts in Health program played an important role in bringing the project to life, connecting the research team with music therapists across South Australia and the Australian Music Therapy Association. These conversations helped identify the challenges therapists may face when supporting First Nations families and highlighted the need for culturally relevant resources within healthcare settings.

Before the project, many music therapists had limited culturally appropriate materials available to help build trust, familiarity and connection with Aboriginal patients and families during treatment and hospital stays.

The project helps bridge that gap by combining the therapeutic benefits of music with the richness of Aboriginal language, storytelling and cultural expression. Songs featured in the resource include Kaurna, Ngarrindjeri, Gunditjmara and Torres Strait Islander languages, among many others, with much of the music newly composed specifically for the Health Songbook.

By creating a resource grounded in culture and community, the project is helping ensure Aboriginal children and families feel more seen, understood and supported throughout their healthcare journey.



Tilly Thomas



Back Row: John Lattin, Luke Dollman, Grayson Rotumah and Myles Turner
Front Row: Jill Newman, Maybelle Swaney and Tilly Thomas

The Heart of Healing

New artwork has transformed Rose Ward, helping create a more welcoming, culturally safe and connected environment for Aboriginal children and families.

At the Heart of Healing reflects the ward's commitment to ensuring every child and family feels seen, respected and supported throughout their hospital journey.

At the centre of the artwork are nurses and health workers, recognised as the heart of the ward and the care families receive every day. Surrounding them are 19 smaller camps representing each patient bed and the many children and families who pass through

the ward each year. Purple travelling lines weave throughout the artwork, symbolising the strong connections between patients, families and staff, and the shared journey of care, healing and support.

Smaller decals placed throughout the ward extend the story beyond a single artwork, creating a sense of continuity, comfort and belonging throughout the space. Together, the pieces serve as a reminder that healing is shaped not only through clinical care, but also through kindness, culture and connection.



Tanaya Antony

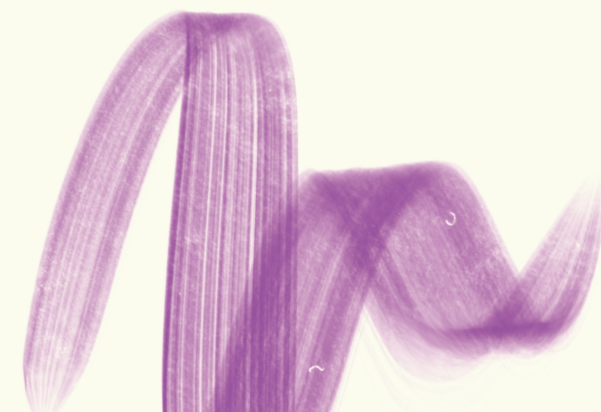


A Shared Effort

The project was led by Rose Ward staff member Paula Armstrong, in close collaboration with the artist, ward staff, consumers and the Aboriginal Health & Wellbeing Division, ensuring the artwork reflected genuine cultural knowledge, lived experience and community connection. The artist was supported by our Arts In Health team in partnership with Ochre Dawn.

The artwork was created by Tanaya Antony, Narungga artist, born and raised on Kurna Land, whose personal experiences as a child spending time in hospital brought an added depth of meaning to the project.

For Tanaya, the work became deeply personal, combining culture, storytelling and lived experience to create a space where Aboriginal children and families could feel safer, more connected and represented within the hospital environment.



Small Comforts, Big Difference

Hospital visits can happen unexpectedly, with some children arriving with little more than the clothes they are wearing. In these moments of uncertainty and distress, even the smallest comforts can make a meaningful difference.

Through support for Child Protection Services at the Women's and Children's Hospital, we help to provide essential care items for children arriving at hospital unexpectedly. Items such as shampoo, conditioner, body wash, toothbrushes and toothpaste help ensure children have access to the basic comforts many of us take for granted.

A warm shower, clean clothes or a new toothbrush can provide dignity and help a child feel cared for, safe and supported during unfamiliar times.



Surrounded in Love

Within the Neonatal Intensive Care Unit at the Women's and Children's Hospital is a space created with extraordinary care and compassion for families facing the unimaginable loss of a baby.

The Mayfly Room provides a private, home-like, comforting environment where families can spend precious time with their child away from the clinical setting of the hospital.

Over the past year, 12 families found solace in the space, using the room to create cherished memories with their baby.

From quiet moments spent skin-to-skin, to handprint artwork created with siblings, the Mayfly Room allows families the opportunity to connect, grieve and simply

be together during an incredibly difficult time. Complete with a bed, private bathroom and small kitchen facilities, and through the support of donors and Paddy and Lulu's Gift, we provide meals and flowers for families offering sense of comfort and privacy when they need it most.



Supporting Aboriginal Families Through Breastfeeding Care

Breastfeeding gives babies the strongest possible start to life, providing essential nutrition while supporting the health and wellbeing of both mother and child. However, for many families, especially Aboriginal mothers who experience higher rates of preterm birth, establishing breastfeeding can be challenging.

Thanks to the generosity of our community, we were able to help support Aboriginal mothers through Nangkita Ngartu, the Aboriginal Family Birthing Program, by providing 25 breast pumps. These pumps will be loaned to new mothers to help establish and maintain breastfeeding during those critical early weeks of their baby's life.

By providing practical support alongside culturally appropriate care, this initiative is helping give more Aboriginal babies the healthiest possible start to life.



Support When it's Needed Most

Every year hundreds of families face the challenge of an unexpected hospitalisation. Whether it's a baby born earlier than expected, an accident causing an injury, or a serious illness, hospitalisation can put immense financial strain on a family.

This year, we've supported more than 230 families through our Family Support program, helping ease some of the financial and practical pressures associated with hospitalisation.

Delivered in collaboration with the Women's and Children's Hospital Social Work Department and Taikurrinthe team (Aboriginal Liaison Unit), the program provides immediate assistance to patients and families in urgent need. Support can include emergency transport, accommodation close to the hospital, groceries, utility bills, and assistance maintaining medical equipment required at home.







Book Buddie Maggie at Hospital School SA

Stories That Bring Comfort, Connection and Imagination

Enriching the hospital experience for children and families remains a key part of our work. Through our partnership with Hospital School SA, the Book Buddies program brings qualified volunteer readers into the hospital to encourage reading, nurture literacy skills and create moments of comfort, joy and normality for young patients.

Stories have a special way of building connection, especially for children spending time in hospital.

This year, primary school students at the Hospital School joined millions of children across Australia for National Simultaneous Storytime, sharing in a joyful morning of reading, creativity and connection.

Book Buddies Maggie, Cathie and Shauna visited the classroom to read Luna Roo the Kangaroo Baller before leading fun activities inspired by the story. The session created meaningful moments for students to listen, imagine, participate and simply enjoy being part of a shared experience together.

For children learning in hospital, opportunities like these can make a significant difference. Sharing books and stories provide more than entertainment, they can create a sense of normalcy, spark creativity, support literacy development and provide a distraction from treatment and hospital routines.

Gathering in Love and Memory



This year we again proudly supported the annual Family Gathering, a special event dedicated to honouring and remembering children and babies who have sadly passed away.

Held in the peaceful surroundings of Botanic Park, more than 150 family members came together for a day of reflection, connection and support. Through music, book readings, storytelling and creative activities, families were provided with a safe and compassionate space to remember their children and share their experiences alongside others who truly understood their grief.

For many families, the gathering offered an important reminder that they were not alone.

As one parent shared:

“It was the first time we haven’t felt alone in the loss of our son. We felt a strong sense of community at the family gathering - a community that truly understands what we’ve been through.”

Moments of connection and community can be deeply meaningful for families navigating loss, helping create opportunities for healing, remembrance and ongoing support.



THE BEST FOR EVERY CHILD

Hope for Children With Childhood Dementia

Childhood dementia is a devastating group of rare genetic disorders affecting approximately one in every 2,900 births. For affected children and their families, the impact is profound, with children gradually losing the skills they have worked so hard to develop, including the ability to walk, talk and eat.

More than 145 different genetic conditions can cause childhood dementia, many progressing rapidly and tragically shortening a child's life. Half of all children diagnosed will not live to see their 10th birthday, and many will not reach adulthood. For families, the reality of these diagnoses is heartbreaking, made even harder by the fact that there are currently very few effective treatment options available.

But through research, there is growing hope.

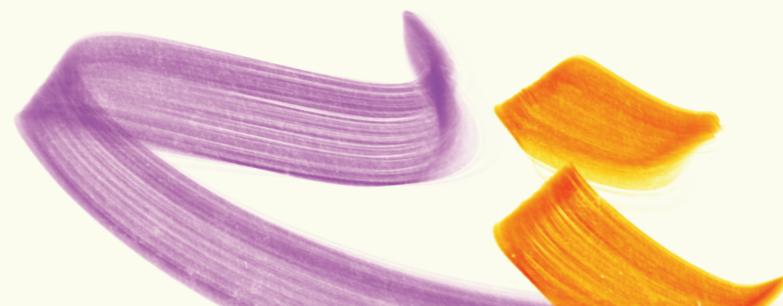
Thanks to our generous donor community, groundbreaking research, led by Professor Kim Hemsley, is now underway. This research is investigating N-acetyl-L-leucine (NAL) as a potential treatment for several forms of childhood dementia.



Professor Kim Hemsley

The drug has already shown promise internationally and has been approved in the United States for Niemann-Pick disease type C, one form of childhood dementia. Early Australian laboratory research now suggests NAL may also benefit children living with other devastating conditions, including Sanfilippo syndrome and GM1 gangliosidosis, diseases that currently have no approved treatments and can dramatically shorten children's lives.

This research represents an important step towards developing life-changing therapies for children and families facing these devastating diagnoses. The project will also help lay the foundation for future clinical trials, bringing researchers closer to translating laboratory discoveries into real-world treatments.



Spencer Barton

More Than a Melody

For children facing serious illness, long hospital stays, or palliative care, music therapy provides more than entertainment. It creates moments of comfort, connection and familiarity in an environment that can often feel overwhelming and uncertain. Through songs, instruments and shared experiences, children are given space to express themselves, connect with loved ones, and simply be children.

For five-year-old Spencer, music became one of the most meaningful parts of his time in hospital.

After being diagnosed with Diffuse Intrinsic Pontine Glioma (DIPG), an aggressive and incurable brain cancer, Spencer spent much of his final months in hospital. A cheeky little boy who adored music, Super Mario, and making people laugh, Spencer formed a special connection with Registered Music Therapist, Maybelle.

Knowing Spencer loved the Super Mario movie, Maybelle began singing the song, *Peaches*, during one of their sessions. What happened next was completely spontaneous. As Spencer recognised the song and engaged with Maybelle the lyrics were changed from "Peaches" to "Spencer."

In that moment, the song became his.

Music has the power to transform the hospital experience. This year, we've supported over 130 music therapy sessions for children and families.

"Spencer, I love you," became a chorus shared between Spencer, his family and the care team around him. What began as a playful connection through music quickly became something deeply personal, a song that captured Spencer's personality, spirit and the immense love surrounding him.

Music therapy gave Spencer and his family moments of joy and togetherness during an unimaginably difficult time. Even in the uncertainty of hospital life, music created opportunities for play, spontaneity and connection. It allowed familiar pieces of home and family life to exist within the hospital walls.

Importantly, music therapy supports the whole family, not just the child. Parents, siblings and loved ones are invited into the experience, creating shared moments and memories that remain long after a hospital stay ends.

For Spencer's family, the song remained so meaningful that Maybelle later performed it at his funeral, honouring the five-year-old boy who loved music so deeply.

Every music therapy session made possible through community support helps create moments of connection, celebration and love that families carry with them forever.

Expanding Support for Mothers and Babies

For mothers living with BPD, many of whom carry their own experiences of trauma, the challenges of early parenting can feel especially overwhelming.

Building a secure bond between parent and baby is one of the most important foundations for a child's emotional wellbeing and development. When parents are struggling with their own mental health, forming this connection can become more difficult, impacting both the parent's confidence and the child's long-term emotional and social outcomes.

The Mother-Infant Dialectical Behaviour Therapy (MI-DBT) program, developed by the Women's and Children's Health Network, is helping change this trajectory for families. The 24-session group program supports mothers to develop emotional regulation and parenting skills, while strengthening the bond with their baby during the critical early years of life.

Families participating in the program often show incredible determination and commitment to creating positive futures for their children, with the program demonstrating strong outcomes for mother-infant relationships and family wellbeing.

Borderline Personality Disorder (BPD) is a complex mental health condition that can make managing emotions and relationships incredibly difficult.

However, demand for the service continues to grow, with long waiting lists and limited access for families living in rural and remote communities.

We're proud to support Associate Professor Anne Sved Williams, Dr Rebecca Hill and their team in developing and testing a telehealth version of MI-DBT, helping make this life-changing support more accessible to families regardless of where they live.

By expanding the program through telehealth, the project aims to reduce barriers to care, shorten wait times and support the training of additional clinicians so the program can continue to grow sustainably into the future.

This work has the potential to strengthen parent-child relationships, improve emotional wellbeing for mothers and babies, and help break cycles of intergenerational traumas, creating healthier futures for more children and families across South Australia and beyond.



Dr Rebecca Hill



Peter, Nicola, Alyssia and Phoenix

Matthew's Legacy in PICU Care

For two decades, the Matthew Scriver Paediatric Intensive Care Unit Nurses Scholarship has supported nurses to pursue projects that improve care for children and families during some of their most critical moments.

Established in 2006 by Matthew Scriver's parents in memory of their beloved son, the scholarship was created to honour Matthew's legacy through compassion, innovation and family-centred care within the Paediatric Intensive Care Unit (PICU).

In 2025, the scholarship was awarded to Alyssia Baker, a committed nurse whose family shares a legacy of giving, with her grandparents being proud supporters of the WCH Foundation.

Alyssia's project, titled 'Retrospective Review of Neuroprotective Management in Paediatric Severe Traumatic Brain Injury Patients Admitted to PICU,' aims to improve the care and outcomes for children facing severe brain injury.

"Protecting the brain is an extremely complex balancing act and it is so important we get it right," says Alyssia. "Ultimately this project will help support our goal of helping these children achieve their best possible neurological outcome."

Alyssia's work reflects the scholarship's ongoing commitment to supporting nurses to lead meaningful improvements in patient care while advancing clinical knowledge and practice.

Through the vision and generosity of the Scriver family, Matthew's legacy continues to make a lasting impact, supporting innovation, empowering nurses and helping improve outcomes for children in Hospital.



In 2025 our Book Buddies created reading adventures at the bedside in over **1,300 SESSIONS** supporting meaningful distraction and literacy development.

Breaking New Ground on the Community Health and Wellbeing Hub

In February we celebrated a significant milestone in the future of community healthcare, officially marking the start of construction for a new community and wellbeing hub, Mofflin Place, in Elizabeth Vale.

The milestone was recognised through a Turning of the Sod ceremony attended by representatives from the Women's and Children's Health Network, Northern Adelaide Local Health Network, City of Playford, Flinders University and the Australian Government, reflecting the strong collaboration behind the transformative project.

Located adjacent to the Lyell McEwin Hospital, Mofflin Place is being brought to life through community support and \$26 million in funding from the Australian Government's Urban Precincts and Partnerships Program. Construction, led by Mossop Construction + Interiors, is expected to be completed in mid-2027.

Designed to support children, families and the wider community across Adelaide's northern suburbs, Mofflin Place will provide access to vital health and wellbeing services closer to home, helping reduce barriers to care for families living in these areas.



Uncle Petiola, Aaron Mossop, Michael Luchich, Matt Burnell, Glenn Docherty and Verity Gobbett

More than just a healthcare facility, the Hub has been envisioned as a welcoming community space where families, organisations and service providers can come together to learn, connect and thrive. Additionally, the facility will support new mothers who have a baby in the Special Care Nursery in the Lyell McEwin Hospital to be accommodated close by, promoting early attachment and breastfeeding. The project reflects a village-based approach to health and wellbeing, focused on strengthening early intervention, connection and community support.

Once complete, Mofflin Place will become a lasting investment in the health, wellbeing and future of children and families across the North, creating opportunities for stronger connections, improved access to services and better outcomes for generations to come.



Mofflin Place, image is for illustration purposes only

A Game-Changer for Little Smiles

For many children requiring specialised dental care, even a routine dental impression can be a frightening and uncomfortable experience.

Traditional dental moulds often involve trays filled with putty being held inside a child's mouth for several minutes while the impression sets, a process that can cause anxiety, gagging and distress, particularly for babies and children with cleft lip, palate or other craniofacial conditions.

For some children, the process can be especially challenging due to restricted mouth opening or complex medical conditions, with failed impressions sometimes requiring multiple attempts. For babies undergoing treatments such as nasoalveolar moulding (NAM), there can also be additional concerns around comfort and airway safety.

A new dental scanner, made possible thanks to the generosity of our community, almost completely removes the need for traditional putty impressions, instead using a quick, non-invasive digital scan to create highly accurate images of a child's mouth in as little as 30 seconds. The result is a faster, gentler and far less distressing experience for children and their families.

For parent, Amy, and her daughter Zoe, who is undergoing NAM treatment, the impact has been significant.



Baby Zoe and her parents

“Zoe is having nasoalveolar moulding treatment which means she needs accurate images of her mouth taken to ensure the mould is personalised to fit her mouth. The new intraoral scanner means the process is quicker and less distressing.” - Amy

Beyond improving comfort, the scanner also provides clinicians with highly precise digital imaging, helping streamline treatment and improve access to care for children requiring dental appliances, orthodontic devices and craniofacial support.



New Pathways for Morquio Syndrome Research

For children living with Morquio syndrome (MPS IV), the effects of the disease become increasingly devastating over time. While many children appear healthy at birth, the condition gradually causes severe skeletal abnormalities, chronic pain, reduced mobility and lifelong disability, significantly impacting both quality of life and life expectancy.

Morquio syndrome exists in two forms, MPS IVA and MPS IVB, and treatment options remain extremely limited. While enzyme replacement therapy can provide some benefit for children with type A, it does little to address the serious bone complications that are central to the condition. For children with type B, there are currently no approved treatments available.

However, newly funded research, led by Dr Karissa Barthelson, has the potential to significantly advance global understanding of Morquio syndrome and open new possibilities for children and families currently living without effective treatment options.

Zebrafish share important genetic and biological similarities with humans, particularly in the way bones develop, making them a promising model for studying skeletal disorders. Their rapid growth and suitability for large-scale testing also provide researchers with valuable opportunities to explore potential treatments more efficiently.

One of the greatest barriers to developing new therapies has been the lack of reliable research models that accurately reflect how the disease affects children. Existing animal models do not adequately replicate the severe skeletal changes associated with Morquio syndrome, limiting researchers' ability to test and develop effective treatments. Dr Barthelson's groundbreaking research will develop innovative zebrafish models of Morquio syndrome to help accelerate understanding of the disease and support future therapeutic development.

The project is funded through the Malcolm Douglas Grant Research Fund, established in memory of Malcolm Douglas Grant to support world-class research into Morquio syndrome, related mucopolysaccharidoses and other rare genetic disorders affecting bone development.



Dr Karissa Barthelson



Helping Children Feel Safe and Prepared

For many children, hospital visits can feel overwhelming. Unfamiliar rooms, medical equipment, and procedures can create fear and anxiety, particularly for children with complex medical needs or additional sensory challenges.

Eight-year-old Cody knows this experience well. Living with complex medical conditions, including Autism, and vision impairment, Cody has spent significant time at the Women's and Children's Hospital. Yet even after many visits, new procedures can still cause distress and uncertainty.

Cody's mum, Melissa, saw firsthand how difficult it was for her son to prepare for procedures using written information alone. As a consumer advocate at the Hospital, she suggested creating videos filmed from a child's perspective to help children better understand what to expect before arriving.

With support from the Foundation, Speech Pathologist Emma Evans helped bring this idea to life, developing

New child-focused preparation videos are helping children feel safer, calmer, and more confident before medical procedures.

a preparation video for children undergoing a swallow study; a procedure used to assess swallowing difficulties and aspiration risk. The video gently introduces children to the room, equipment, and process step-by-step, helping make an unfamiliar experience feel more predictable and less frightening.

Families have already shared positive feedback about the impact these videos are having, helping reduce anxiety and supporting children to feel more prepared and in control during hospital visits. The extra preparation also means that children are more likely to be successful with their swallow study "first time", reducing the need for additional future attempts.

This project highlights the power of consumer-led ideas and collaboration, bringing together families, clinicians, and community support to improve the hospital experience for children and families navigating complex care journeys.



Jodie Beck and Belinda Hall

Bringing Cancer Care Closer to Home

For children living with cancer and blood disorders, treatment often means long hospital stays, frequent appointments, and time away from the comfort of home and family routines. For many families, the emotional and practical strain of travelling back and forth to hospital can be overwhelming during an already incredibly difficult time.

The Oncology@Home project aims to change that, creating opportunities for more children to safely receive treatment and care in the place they feel most secure: home.

Supported through the Loving Lucy Mae Fund, an initial \$15,000 contribution has helped fund a dedicated project nurse to explore what is needed to safely expand home-based care for paediatric oncology patients. Over several months, the project brought together families, clinicians, and healthcare providers to help shape the future model of care.

The project is part of the lasting legacy of Lucy, who was diagnosed with brain cancer at just six years old. Over 18 months, Lucy underwent treatment at the Women's and Children's Hospital, facing every challenge with remarkable courage and resilience.

Following Lucy's passing in 2020, her family established the fund to honour her life and support other children and families facing cancer. Led by her mum, Jodie, the community has rallied behind the fund through events from sausage sizzles to gala balls and other fundraising activities, raising over \$25,000 to support childhood cancer care and services.

Through projects like Oncology@Home, Lucy's legacy continues to make a meaningful difference for families navigating childhood cancer, helping create hope for a future where more children can receive vital treatment surrounded by the comfort, familiarity, and love of home.

A Sound Future for Children's Hearing Health



Each year, the Audiology Department at the Women's and Children's Hospital provides diagnostic hearing assessments to more than 5,000 children, supporting babies, children and young people with a wide range of hearing and ear health needs.

The service cares for both inpatients and outpatients across all ages and levels of complexity, helping ensure children receive early diagnosis, intervention and ongoing support critical to their communication, learning and development.

We were proud to help fund a Titan Tympanometer, an important piece of portable diagnostic equipment used to assess middle ear health and cochlear function.

While regularly used within hospital clinics, the portable technology is also playing an important role in outreach services, including Aboriginal ear health clinics and visits to rural and remote communities across South Australia and cross-border regions.

By supporting access to modern equipment both within the Hospital and beyond metropolitan areas, you're helping improve access to quality hearing care for children and families, regardless of where they live.

“The Audiology Department sincerely thanks the WCH Foundation for their generous support in purchasing the new Titan device. This valuable contribution enables us to provide high-quality care and services to our patients, both at the hospital, and in the community”.

- Phoebe Hall, Paediatric Audiologist



Supporting Children's Eye Health

Children and babies receiving ophthalmology care continue to benefit from specialised equipment helping clinicians diagnose and manage serious eye conditions earlier and more comfortably.

Thanks to the support of the SA Power Networks Employee Foundation, the Ophthalmology team has access to a specialised portable tonometer used to measure eye pressure in children of all ages.

The device plays an important role in detecting and monitoring conditions such as glaucoma, providing quick and accurate measurements at the bedside or in clinic settings.

Importantly, the portable technology often allows assessments to be completed without the need for anaesthesia, helping reduce stress and discomfort for young patients and their families.

For babies and young children who may not yet be able to explain changes to their vision or describe symptoms, access to fast and reliable diagnostic tools is critical in supporting early intervention and ongoing care.

Engagement Boards Strengthening Patient-Centred Care

We were pleased to fund new engagement boards at every inpatient bedside across the Women's and Children's Health Network, supporting clearer communication and more meaningful connections between patients, families and healthcare teams.

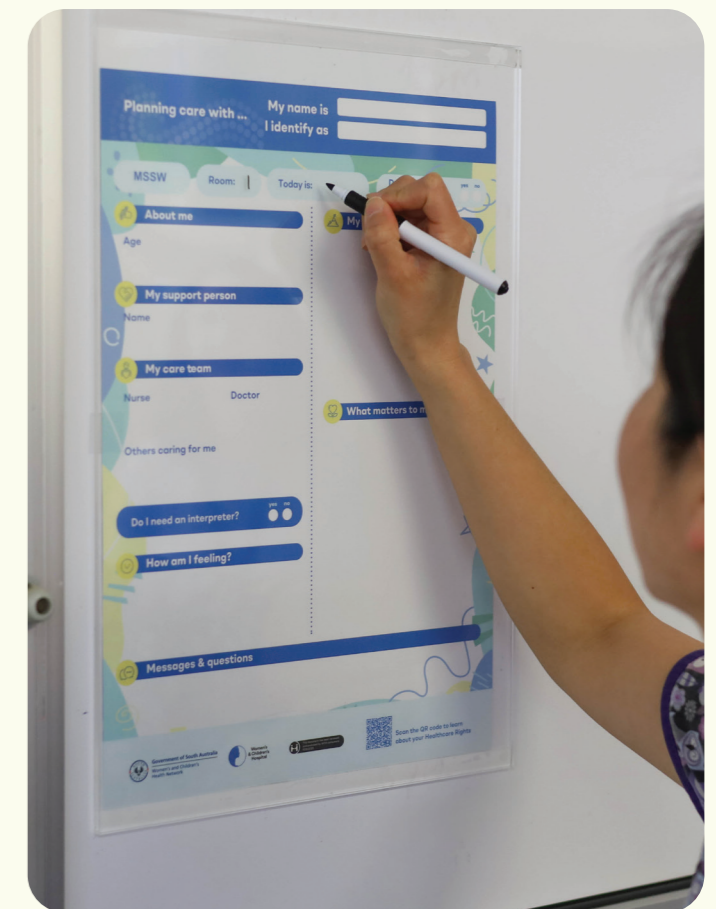
Thoughtfully co-designed with clinicians, consumers and families, the boards were created to help patients and carers feel more informed, involved and empowered throughout their healthcare journey.

Each board provides dedicated space for families to write questions, share important information, communicate how the patient is feeling and outline daily goals and priorities. By creating opportunities for ongoing conversation and shared decision-making, the boards help ensure families feel heard and actively involved in their child's care. The boards are particularly important when there are multiple people involved in a child's care, with one parent sharing:

“Even if we left the room, we felt confident that the most important care details were visible to any nurses or clinical staff who may have come on shift. We didn't have to re-explain our daughter's preferences each time new people were introduced to our care team.” - Consumer feedback

The initiative also included the development of a culturally responsive version designed in collaboration with Aboriginal consumers and staff, helping create more culturally safe, respectful and meaningful engagement for Aboriginal patients and families.

While simple in design, the engagement boards are helping strengthen communication, build trust and improve patient experiences across the network. They also provide clinicians with an important tool to support coordinated care and ensure every family's voice remains at the centre of decision-making.





The Cocoon Team: Kirstie Morgan, Charlotte Watson, Kate Morley, Michalie Violante and Dr Milithi Hauser

Creating Lasting and Holistic Change in Care

What began as a pilot program funded through community generosity is now creating lasting change for some of South Australia's most vulnerable babies and their caregivers.

Established in 2023 the Cocoon program was designed to provide wraparound care and support for infants under 12 months of age who are both medically vulnerable and in foster care, or at risk of entering foster care.

More than a traditional healthcare service, Cocoon brings together medical care, allied health, psychosocial support and mental health services in one place, helping families access the support they need in a coordinated and compassionate way. Additionally, an Aboriginal Cultural Care Worker ensures that care is delivered in a culturally safe way.

By the end of the pilot (Dec 2025) 168 infants had been supported by the Cocoon program, with many caregivers describing the service as "life-changing." The program's impact has also been recognised through major honours,

including the Outstanding Service Award at the 2025 South Australian Child Protection and Family Support Awards, and the Out of Hospital Strategies and Care Award at the 2025 Women's and Children's Health Network Excellence Awards.

In 2025, it was announced that due to the success of the Cocoon program in meeting the needs of this cohort of babies and their caregivers, it will receive ongoing funding and support from the South Australian Government, ensuring the service can continue well into the future.

This outcome highlights the important role philanthropy plays in driving innovation within healthcare. By funding pilot programs and supporting new ideas, we help clinicians test and deliver models of care that otherwise do not exist. When successful, these programs have the potential to influence broader healthcare systems and create lasting change for children and families across the state.

Supporting Stronger Starts for Families

Helping babies feel secure, understood and connected to their parents can have lifelong benefits for mental health and social development.

But for many families, the transition to parenthood can also be overwhelming. Sleepless nights, settling a crying baby and adjusting to the emotional demands of caring for a newborn can leave parents feeling exhausted, uncertain and isolated. While support during this period can make an enormous difference, many parents receive little guidance around building strong emotional connections with their baby before birth.

To help address this gap, we are proud to support innovative research led by Dr Alyssa Sawyer and her team at the University of Adelaide, SA Medical Imaging and the Women's and Children's Health Network.

Dr Alyssa Sawyer's research is focused on developing and expanding an attachment-based support program designed to strengthen parent-infant relationships and support infant mental health from the earliest stages of life.

The program combines several innovative approaches to help parents build connection and confidence before and after birth. These include attachment-focused ultrasounds during pregnancy, helping parents emotionally connect with their baby at the 20-week scan, alongside virtual home visits both before and after birth to support bonding, infant sleep, settling and emotional development.



The earliest relationships in a child's life play a critical role in shaping their emotional wellbeing, development and sense of safety.

An initial pilot trial demonstrated promising outcomes, with parents reporting stronger bonding with their baby, increased confidence in parenting and greater understanding of safe infant care. Importantly, families involved in the trial expressed a strong desire for the program to be available to all parents, not only those identified as at risk.

The research team is now working to adapt the program into a universal model that could eventually be integrated alongside routine antenatal and postnatal care.

By working closely with parents and clinicians, the team hopes to create a practical and accessible program that can support families during one of the most important periods of a child's development.

If successful, the project has the potential to strengthen parent-infant relationships, improve infant mental health outcomes and ensure more families have access to early support and guidance, helping give every baby the strongest possible start in life.



Transforming Recovery for Newborns: The DELA3Y Trial

For some families, the joy of welcoming a new baby is quickly replaced by fear and uncertainty when their newborn requires urgent surgery shortly after birth. Babies born with serious congenital conditions affecting the abdomen or chest often face complex operations within their first days of life, followed by long and complex recoveries in the Neonatal Intensive Care Unit (NICU).

While these conditions are rare, they account for almost one in five NICU admissions across Australia. For these tiny patients, recovery is often complicated by the challenge of safely reestablishing nutrition after surgery.

Supported with vital research funding, Professor Michael Stark and his team are leading the world-first DELA3Y Trial to explore whether a simple change in nutritional timing could transform recovery for newborns following major surgery.

The study is comparing early versus delayed amino acid delivery in babies recovering from surgery, with researchers closely measuring the impact on recovery times, respiratory support needs and longer-term health outcomes.



Professor Michael Stark

Because many newborns are unable to tolerate milk feeds immediately following surgery, they instead rely on intravenous nutrition to support their growth and recovery. Traditionally, this nutrition includes carbohydrates, fats and amino acids from the beginning of treatment. However, emerging evidence from critically ill children suggests that delaying amino acids may significantly improve recovery, reducing time spent in intensive care and decreasing the need for breathing support.

Until now, no large-scale study has investigated whether this approach could improve outcomes specifically for newborn surgical patients. Without this evidence, clinicians have been unable to confidently make changes to the nutrition delivery protocols for some of the hospital's most vulnerable babies.

Importantly, the research has the potential to deliver meaningful improvements through a relatively simple and cost-effective intervention. If successful, the findings could help shorten intensive care stays, reduce complications and improve recovery experiences for babies and families, not only at the Women's and Children's Hospital, but in NICUs around the world.

Since 2024, we have committed more than **\$3 MILLION IN RESEARCH** funding to improve health outcomes for infants in the NICU+ beyond.

PARTNERING FOR PURPOSE

BIG W, Bigger Impact

Five years ago, BIG W embarked on a mission to support the WCH Foundation through a five-year partnership. With an ambitious goal of raising \$500,000, State Manager, Kris, and the BIG W team set out to make a difference.

In 2025 BIG W exceeded all expectations, raising an incredible \$679,629.65, surpassing their goal by nearly \$180,000! This remarkable achievement is thanks to the dedication of BIG W staff and the generosity of their customers who supported the Token Campaigns over the years.

This partnership is a shining example of what can be achieved when a company truly believes in giving back to the community. By working together year after year, BIG W has helped us create brighter futures for children and families in need.

We extend our heartfelt thanks to the entire BIG W team for their incredible support and commitment. Your efforts have made a lasting impact, and we couldn't be more grateful.



Big W staff and WCH Foundation team

A Home Built for Good

In November, we proudly joined a landmark community fundraising initiative that brought together generosity, partnership and purpose.

Through The Advertiser Foundation's SA Kids Appeal, a brand-new family home, known as The Good Home, was auctioned to raise vital funds for six South Australian children's charities, including the WCH Foundation.

Proudly donated by Villawood Properties and Weeks Homes, the beautifully designed two-storey home was built within the Oakden Rise community and represented far more than bricks and mortar. It became a symbol of hope for families facing some of life's toughest moments.

When the hammer fell on Saturday 1 November, The Good Home sold for an incredible \$973,000, with 100% of the sale proceeds donated to the SA Kids Appeal.

Funds raised through the initiative will directly support our Family Support program, helping families experiencing financial hardship while their child is in hospital or receiving ongoing medical care.

The program provides immediate practical assistance for essentials such as fuel, accommodation, groceries and other everyday costs that can quickly become overwhelming during a child's illness.

The contribution from The Good Home Auction is expected to support around 160 families across South Australia, easing financial pressure and helping parents focus on what matters most, being by their child's side.

The initiative also highlighted the incredible impact that can be achieved when businesses, media partners and the community come together behind a shared cause. Through the generosity of supporters and the vision of The Advertiser Foundation, The Good Home became more than a house, it became a lasting investment in the wellbeing of South Australian children and families.



Verity Gobbett, Jane Ford and Fern Cargill



A Winning Weekend for Kids



For the third consecutive year, we proudly partnered with the AFL as the official charity partner for the 2026 AFL Gather Round.

Across an action-packed weekend of footy, families, and community spirit, we asked supporters to once again “Kick a goal for Kids” to help get kids back to the things they love most, their families, their backyards, and their footy.

This year’s campaign brought together footy fans, players, local businesses, corporate partners and the wider community, and together we raised over \$153,000.

This year the Kick it for Kids campaign came to life through a range of fundraising and family-focused activities across Gather Round weekend. Local venues rallied their communities in creative and generous ways, donating proceeds from sales and encouraging patrons to get behind the cause. From cafés and pubs to fundraising

competitions and community events, the spirit of Gather Round extended far beyond the footy field.

A group of hospital families were given the opportunity to attend AFL games, meet players and enjoy a special experience at AFL Max, creating special memories away from the hospital environment. We activated a chill-out zone at the Footy Festival which created a welcoming space for children and families to take a break from the chaos and time to just be.

The incredible fundraising result was made possible thanks to the generous support of partners and sponsors. Peter Kittle Toyota returned as the campaign’s major matched giving partner, matching the first \$25,000 in donations, while Unified Solar Solutions also helped drive the campaign forward through matched giving support.



Sam, Jude, Daisy and Tara

At the heart of the campaign was an incredible family who courageously shared their story. Jude, Daisy, Tara and Sam helped put a face to the campaign, reminding supporters why helping children get home sooner matters so deeply.

Jude lives with cerebral palsy, epilepsy, cortical vision impairment, intellectual disability, and is non-speaking, due to complications from meningitis and sepsis when he was just 24 days old. He also underwent open-heart surgery as a baby for congenital heart disease.

The Women’s and Children’s Hospital has been a constant in his life.

Jude has spent time in the Paediatric Intensive Care Unit (PICU) and Rose Ward and continues to return regularly for appointments, therapies, and care. “We cannot thank the hospital team enough,” Tara says. “They didn’t just care for Jude, they cared for us”.

Through the power of partnership and the generosity of the community, Gather Round 2026 once again showed what is possible when people come together to Kick a goal for kids.

Together we kicked more than **25,000 GOALS!**



Andrew Dillon, Harry McKay, Taylor Walker and Peter Malinauskas



Adelaide Crows players Luke Nankervis and Josh Rachele with WCH patient



Beau delivering the official match football to the umpire



Jake, Maddi, Livvy and Perlie

Running for Livvy

In August 2025, Livvy's dad Jake, alongside brothers Daniel and Tom, and their dad Rob, set themselves an extraordinary challenge in honour of a little girl who changed their lives forever.

Together, the group committed to running 10 kilometres every day for 30 days.

What began as a deeply personal tribute quickly grew into something much bigger. Supported by family, friends and the wider community, the challenge raised more than \$28,000, an incredible show of generosity inspired by Livvy's story and the care her family received throughout her life.

"It is a privilege to be able to raise funds and help other families going through something similar or those having to deal with the unexpected," Jake shared.

"Livvy couldn't choose her diagnosis, but we could choose to honour her. We have been supported so much by everyone at the Women's and Children's Hospital, and we felt giving back was the least we could do." - Perlie

Before Livvy was born, routine scans revealed a complex congenital heart condition involving multiple abnormalities. While doctors initially hoped she would go on to live a relatively normal life, her medical journey quickly became far more complicated.

Livvy spent the first months of her life in hospital before eventually returning home to Alice Springs with her family. Feeding challenges became a significant part of her early life after surgery damaged her vocal cords, making sucking and swallowing difficult. With her tiny heart already working overtime, feeding would quickly exhaust her, and much of her infancy was spent relying on a nasogastric tube for nutrition.

Despite the medical challenges, Livvy's personality continued to shine brightly. She adored her big sister Maddi, and while Maddi could not always hold or cuddle her for long periods, the connection between them was immediate and profound.

Living remotely added another layer of complexity for the family. Each appointment often meant flights between Alice Springs and Adelaide, lengthy hospital stays and time away from home. Simple activities many families take for granted, like holidays or trips into town, became almost impossible due to the fragility of Livvy's health.

As Livvy's condition became increasingly complex, the Paediatric Palliative Care Service at the Women's and Children's Hospital became an essential source of support for the family.

Most importantly, the team helped the family navigate incredibly difficult decisions with compassion and honesty, encouraging them to trust themselves and focus on quality of life for Livvy and for the family.

"They told us to make sure we were giving her, and ourselves, the best quality of life possible and reminded us that we knew Livvy best."

In 2024, Livvy passed away at just 18 months old, surrounded by love.

In the months that followed, the support for the family continued. Through the Women's & Children's Hospital Foundation and the Paediatric Palliative Care Service, the family received books and resources to help Maddi understand and process the loss of her little sister.

The family also spent precious time together at the Laklinyeri Beach House, after scattering Livvy's ashes.



Livvy

"The time at the Beach House helped us relax, reflect and unwind. We were able to make new memories together as a family." - Perlie

Reflecting on their journey, the family hopes others facing similar circumstances understand that palliative care is not about giving up.

"Palliative care is about giving more, more comfort, more presence, more space for connection," Perlie Olivia's mum shared. "We learned to treasure the quiet moments, holding hands, sharing stories and simply being together."

Through community fundraising efforts like Jake's challenge, families like Livvy's continue to receive vital support during some of life's most difficult moments. Every dollar raised helps ensure children and families receive not only exceptional medical care, but also comfort, connection and compassionate support when they need it most.

150 FAMILIES have made precious memories at the Laklinyeri Beach House.



Megan and team at Coles Firle

Hospitals United for Sick Kids

Our vital work was made possible thanks to the generous support of Hospitals United for Sick Kids, Australia's only national alliance of children's hospitals, foundations and paediatric services.

Together, we share a commitment to helping children spend less time in hospital and more time where they belong, at home, at school, and with the people and routines they love most.

From helping new parents feel heard and supported during uncertain times, to providing young people living with chronic pain access to coping strategies and specialised care, partnerships like this ensure families receive support that extends far beyond the bedside.

This year, Hospitals United for Sick Kids national partnership campaign with Coles once again rallied communities across Australia to support sick children

and their families. Through the annual appeal, more than 170 participating products helped raise funds for vital paediatric projects and initiatives across the country, with Coles, suppliers and customers coming together to make a meaningful difference.

Customers could also support the campaign through donations at checkout and by purchasing Mum's Sause products, with proceeds continuing to support Hospitals United for Sick Kids year-round.

Through partnerships like Hospitals United for Sick Kids this support reaches families at the moments they need it most, reducing stress, easing financial pressure, and helping families focus on what matters most: being together and supporting their child through treatment and recovery.

Making
Health
better
together.

Thank you



BUILDING A PLAYGROUND TOGETHER

We extend our sincere thanks to **SA Power Networks** and the **Enerven Employee Foundation**, who launched our Playground campaign by matching the first \$20,000 raised. We are also grateful to **AHT Electrical**, the **Australian Football League**, **Foodland** and the **Good4Locals Foundation**, alongside our community of donors whose contribution helped create a place where children can play, recover and give them the chance to simply be kids.

FREEMASONS SA & NT

A generous \$50,000 donation from **Freemasons SA & NT** has helped transform the dental experience for children. Their support funded a state-of-the-art intraoral scanner, enabling faster, more accurate and less invasive dental impressions, improving both clinical outcomes and the patient experience for young people and their families.

BAMBI MINI CO

Bambi Mini Co put their best foot forward for sick kids through their Charity Super Socks campaign. Thanks to the support from customers purchasing Charity Super Socks online and through Chemist Warehouse stores, Bambi Mini Co raised an incredible \$30,000.

MOOGOO

Through generous donations of oncology care packs, maternity care packs for new mums, and a range of other essential products, **MooGoo** has helped bring comfort and practical support to children and families.

MOSSOP

We are incredibly grateful to the **Mossop** family for their generous support and ongoing commitment to the South Australian community. Their contribution of \$10,000 to the Family Council Gift Fund is helping enhance the hospital experience for children and families.



HANSEN YUNCKEN

At **Hansen Yuncken**, building stronger communities is as important as building great projects. Through staff-led fundraising initiatives, the Adelaide team raised an impressive \$11,300.

TRADING METALS

Trading Metals has reached an incredible milestone, contributing more than \$100,000 to support children and families in our community.

Community-minded business owners and brothers, Sergio and Jorge, have linked their support of the WCH Foundation directly to the success of their business, making a donation for every tonne of scrap metal processed. This unique approach has transformed everyday recycling into meaningful support.

SHAW AND PARTNERS FOUNDATION

The **Shaw and Partners Foundation** helped spread Christmas cheer with a generous \$5,000 donation. Their support provided practical assistance and comfort to families spending the holiday period navigating hospital stays and healthcare challenges.



PETER KITTLE TOYOTA

The dedicated team from **Peter Kittle Toyota** rolled up their sleeves for a working bee at Laklinyeri Beach House in Victor Harbor. Through cleaning, repairs and maintenance, they helped ensure this much-loved retreat remains a welcoming sanctuary for families navigating palliative care, complex care and bereavement.

ALICE MONFRIES/ 9NEWS

Led by **9News** presenter **Alice Monfries**, the Run for a Reason team laced up their trainers and took on 12kms in the City-Bay Fun Run to raise vital funds.



ATHELSTONE FOOTBALL CLUB LUNCH

A special Allira's Angels Luncheon held at the **Athelstone Football Club** brought the community together raising more than \$10,000. The generosity of everyone involved in the luncheon is helping ensure more families can enjoy moments of connection, comfort and joy.

THANK YOU

Every partnership, donation, fundraising event and act of generosity helps create meaningful change for children and families when they need it most. We are incredibly grateful to all of our corporate partners, community groups, and supporters who stand alongside us in our mission.

Together, you help fund world-class care, groundbreaking research, family support services and life-changing programs, helping give every child every chance.



THANK YOU



Your generosity, time, and trust have made this year's impact possible.

To support our work and learn how you can partner with us:

Visit wchfoundation.org.au

Call (08) 8464 7900

Email hello@wchfoundation.org.au

Back Cover created by artist Tanaya Antony - Narungga, born and raised on Kaurna land

